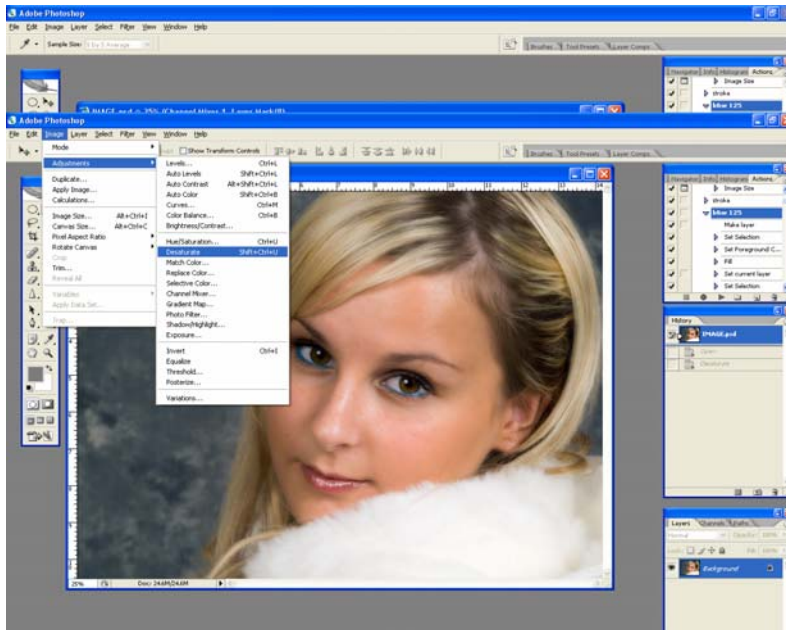


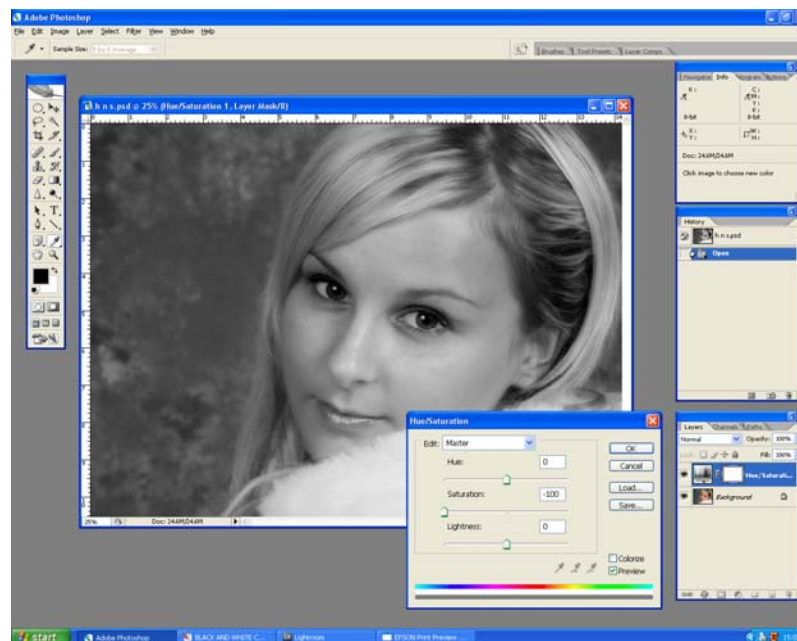
# 10 ways to go Black and White

## 1. Desaturation



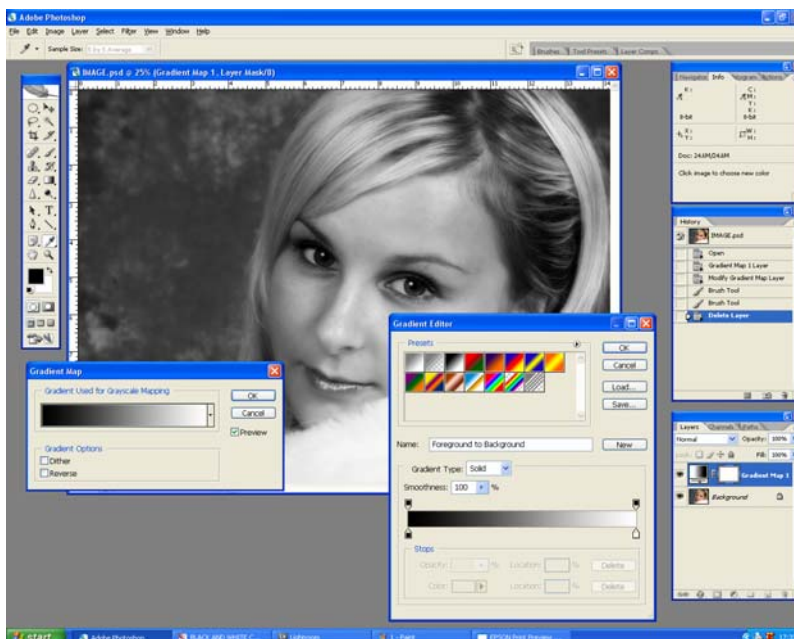
- Image
- Adjustment
- Desaturate.

## 2. Hue/saturation



- Create a new Adjustment Layer – Hue/Saturation
- Using the middle slider (saturation) move to -100%

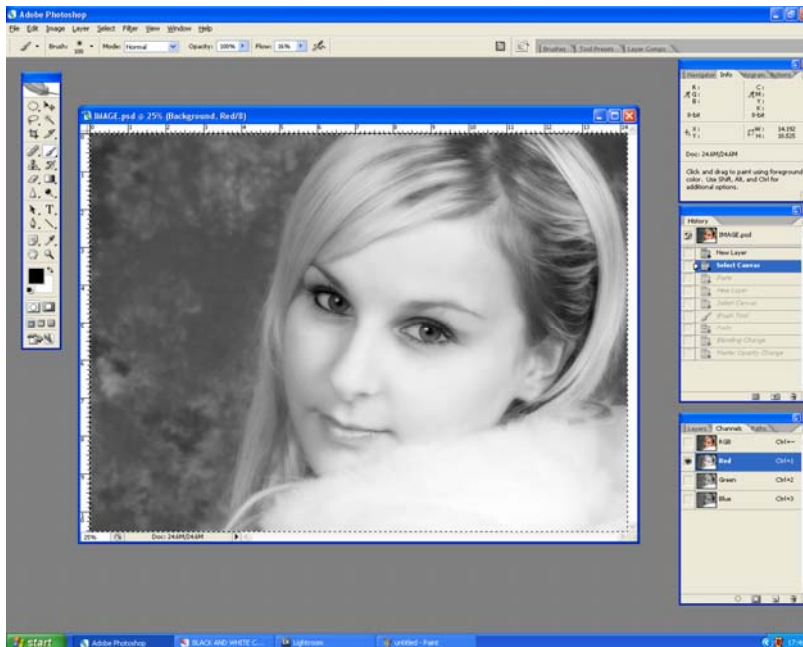
## 3. Gradient Map



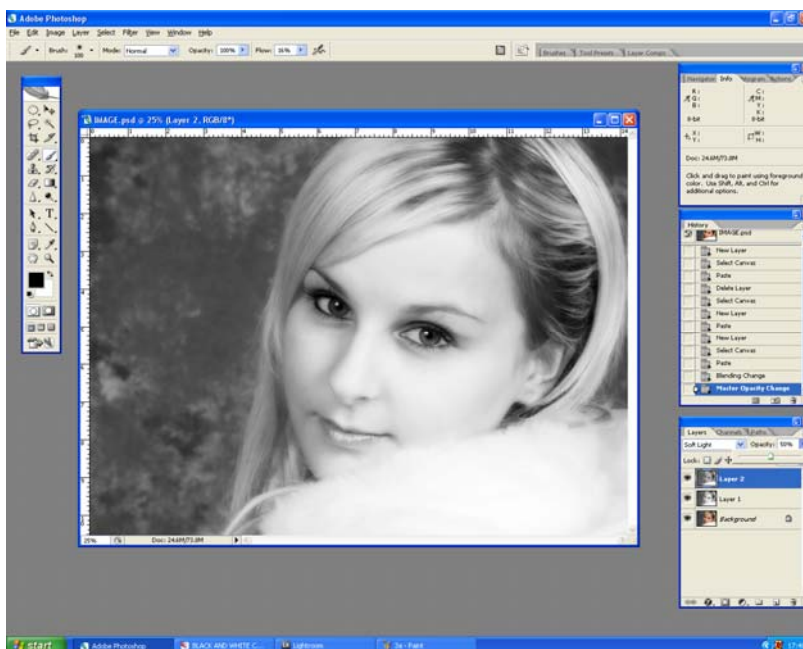
## 3. Gradient Map

- Create a new Adjustment Layer – Gradient Map
- Click on the Gradient Bar
- Select Black, White
- OK

## 4. Channels

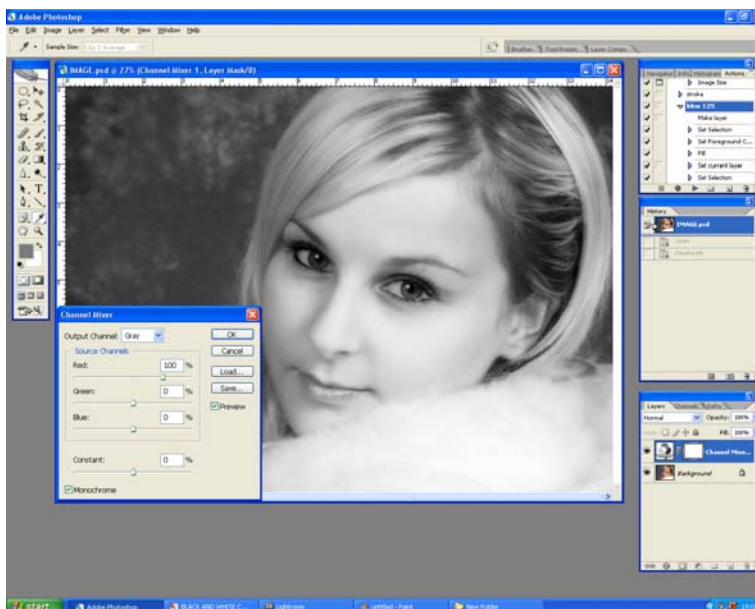


- Create a new layer
- Ensure that you are on the background layer – or the image layer that you are wishing to turn black and white.
- Go to the Channels pallet
- Select the red pallet
- Select the image ctrl A
- Copy the selection ctrl C
- Go to the layers pallet
- Paste the image into your empty layer ctrl V



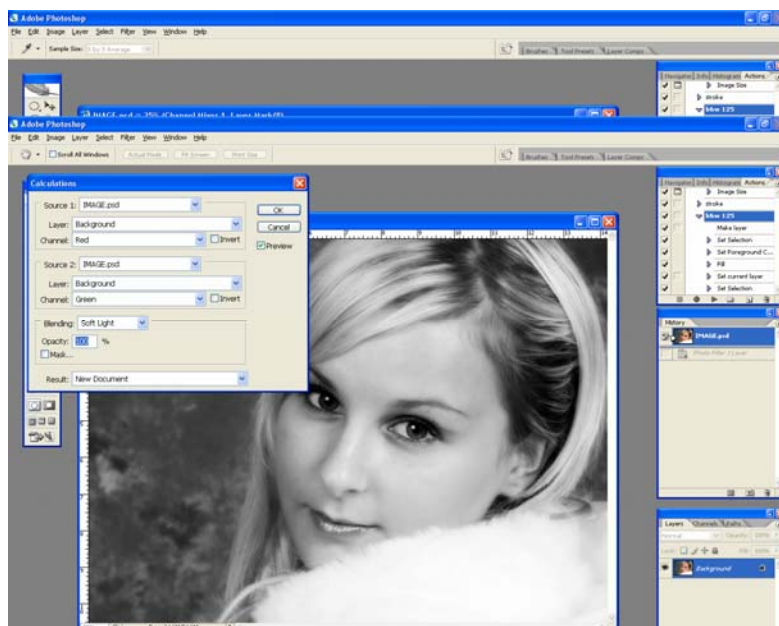
- Create a new layer
- Ensure that you are on the background layer – or the image layer that you are wishing to turn black and white.
- Go to the Channels pallet
- Select the Green pallet
- Select the image ctrl A
- Copy the selection ctrl C
- Go to the layers pallet
- Paste the image into your empty layer ctrl V
- Change the blend mode to Soft light
- Reduce the opacity of the layer to 50%

## 5. Channel Mixer



- Create an adjustment layer – Channel Mixer
- Check the box in the bottom left corner “Monochrome”

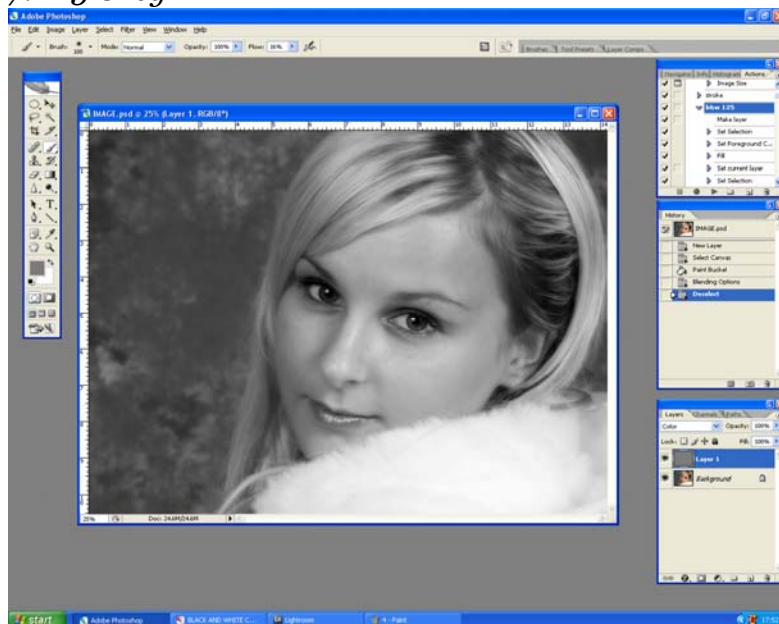
## 6. Calculation



- Image
- Calculation
- Move to Source 2
- Change the channel to Green
- Ensure that the blend mode is Soft light
- You can at this stage alter the % opacity if you wish to
- Change the last drop box to new document – this creates a Black and white image of your document and dose not effect your original.

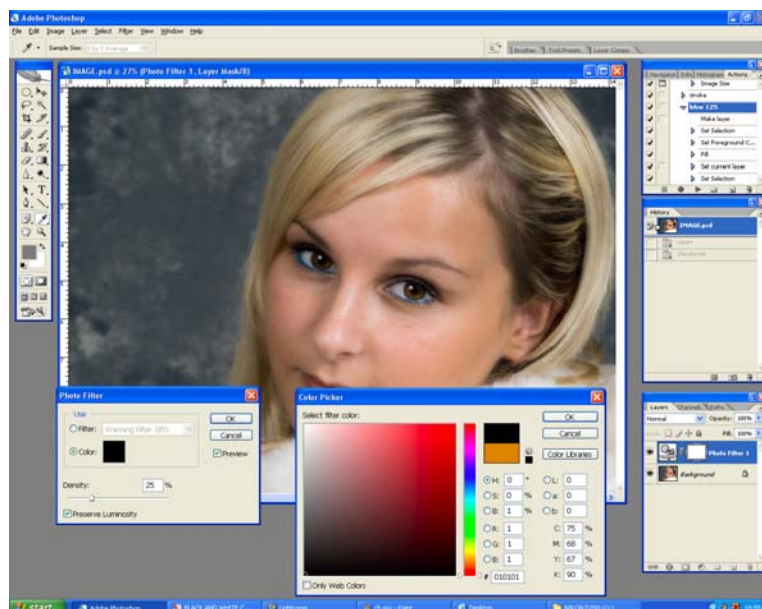
If you wish to edit this document you will need to change the colour mode

## 7. 125 Grey



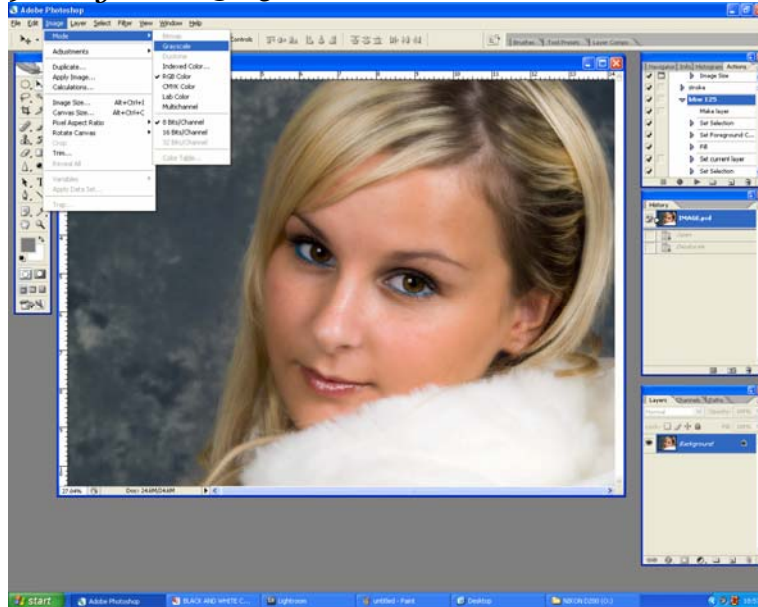
Create a new layer  
Fill the layer with mid grey – Red 125 blue 125 green 125  
Change the blend mode to Colour

## 8. Photo Filter



Create an adjustment layer – Photo Filter  
Click in the colour box  
Change to black – Red 1, Green 1, Blue 1.  
Set density to 100%  
Ok

## 9. Grey Scale @ 25%



- Image
- Mode
- Grey Scale
- Discard Colour information – ok

## 10. Printer management

*Let your printer convert to Black and White*

*Some printers have an option to print in black and white this can also product good black and whites – find what works for you and PLAY.*