

Ipswich and District Photographic Society
www.idps.org.uk



Levington Marina by Dennis Lumkin LRPS

DECEMBER 2010 BULLETIN

EDITORIAL

It is important to read this issue as it has all the information about the forthcoming IDPS Annual Exhibition, see pages 5 to 9.

On page 11 are the notes for the now very successful New Members Group run by Christine Hart, which is helping new members to integrate into the Society and to assist beginners to improve their photography. Some of the pictures taken on the New Member Days are shown on pages 11, 18 & 19.

There is a change to the operation of the Portfolio Group run by Phil Smith; it is now for all digital images, see page 10 for details.

The Studio Group continues to meet monthly at the Bramford Church Hall – contact Terri Thorpe if you are interested in this form of photography. See pages 16, 17 and 18 for the group notes and for some pictures taken at recent meetings.

The Print Section continues to be keenly supported, with many prints on view at the monthly competition evenings. It is hoped that next season the digital projected image competitions will be equally well supported when they move to a Monday night at Bramford.

We are entering an exciting period in the history of IDPS and the Committee are working hard to produce a programme of activities and new administration, which meets members needs well into the future.

The next Bulletin is due to be circulated to members on Monday 14th February, highlighting the Exhibition awards. Copy closes on 23rd January.

Barry Freeman ARPS DPAGB

President's Notes

Thanks to those who returned the questionnaires in the last bulletin –the Working Party have been taking into account the findings in their deliberations over the future of the Society. All aspects of IDPS are being considered to produce a blueprint for a modern forward looking Society in the 21st Century. Once the Working Party have finished their deliberations and the results presented to the main Committee, we will be in a position to inform you all of the results. There was however overwhelming support for continuation of the exhibition, despite the increasing cost of staging it.

Another one of the things to come out from the questionnaire was the request for days out so we will be looking for volunteers to organise those. You don't have to be on the Committee to do things, so if you would like to organise a day out please let a member of the Committee know and you will be welcomed with open arms! We can either team up and go in cars or organise a coach if it is to somewhere further afield.

Christine Hart has organised some more New Members' days out, which have again been a great success. The follow-up meeting afterwards has been much appreciated by the newcomers as it takes place in an informal friendly atmosphere and helpful advice is given to benefit those present. I look forward to seeing some new members' work in the exhibition so don't be shy, put it in! Information about the Beginners

Section of the exhibition is included in the article by David Robinson later in this bulletin.

Note to all exhibition entrants - please read the rules carefully as it makes the Exhibition Secretaries' work much easier if everything is submitted correctly. If you want your work considered for the NH, Record or Life and Photojournalism Cups you **must** put that on your entry form or your work will not be considered for those cups even though it may be already chosen to be in the exhibition.

I hope that more members will enter the exhibition this year as there is a lot of very good work about which deserves to get a chance to be seen by the public. However, the Judge's decision is final! Don't forget the closing date is Monday 3rd January, but you can hand in your entries before that if you have them ready.

Support for external events and competitions has dwindled drastically in recent years and this is a shame as these events are a chance to see some excellent work from around the region and beyond. You will see from the programme that there are quite a few coming up in the New Year so why not make the effort to go -I'm sure you won't be disappointed!

Although it seems a bit early to be saying this - Best wishes to you all for Christmas and the New Year!

Lynda Robinson LRPS - President

Left behind after the 2010 Exhibition

A canvas print case for 500mm prints
If it is yours please contact Alan Turner

Programme Notes

The first meeting in the New Year is the 3rd January and this is the presentation by Naomi Saul of the Clover Cup, Holbrook Trophy and Roslyn Cup entries. Naomi is well known to many of you as she has been to IDPS before and she is an excellent judge and well worth listening to, even if you haven't put any panels into the competition. It will be particularly useful to new members to find out what constitutes a "panel". The wide variety of subjects entered always makes a good evening's viewing.

It is the closing date for exhibition entries if you haven't already given them in to the Exhibition Secretaries. Please note that Phil Smith is willing to accept entries from anyone who is unable to come to the meeting on the 3rd. His details are in the programme booklet so ring him to arrange a convenient time for delivery. There will also be a raffle that night - a good chance to give away unwanted Christmas presents!

On 17th January the PAGB Digital images from 2010 will be shown -these are supposedly the best images from around the country so come and see if you agree with the judges! They are always worth seeing to find out what other people are taking, even if you are not interested in doing that type of photography yourself. The award winning sets from the Steeds and Nacton Cups will also be shown.

Programme continued on 4

The Cambridge CC inter-club digital competition is on the 22nd January at Whittlesford Memorial hall at 1.30 pm. Tickets must be purchased in advance for this popular event so don't forget to ask David Robinson (Secretary) to get you a ticket if you want to go.

On Monday 31st January Roger Hance will be showing "A Collection of Odds and Sods" –an intriguing title for another great lecture from Roger. Roger has been a member of IDPS nearly since the dawn of time and he never disappoints with his lectures. There will be a raffle this evening as well.

The EAF Print and Digital image competition is on Sunday 13th February at Latton Bush Centre, Harlow. The Digital Competition starts at 10.15 and the Print competition at 2.00pm. Cost is £6.00. This is another competition well worth going to (even though it is a long day) as the standard of work is top class!

On Monday 14th February Barry Freeman will be showing pictures from the IDPS archives which will be a fascinating evening. Diana has been organising the archives over the last few years and we have some lovely, interesting work from past members which deserves to be seen again.

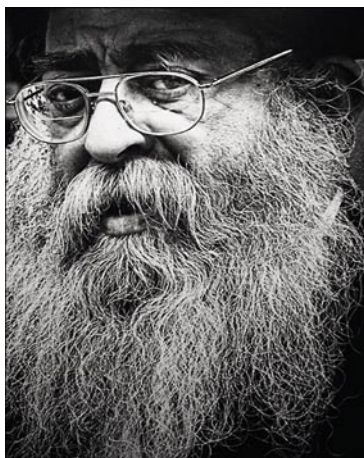
The St. Ives Inter-print competition takes place on Saturday 26th February and is another competition well worth seeing. The prints are up on display during the afternoon and then are judged in the

evening. Several cars will be going, so if you would like to go but need a lift ask around and see who you can team up with!

The highlight of our year, the Annual Exhibition takes place on the 1st March in the Town Hall Galleries. Opening is at 7.30 pm but we need to be in our seats for 7.15 pm to be ready for the mayor's arrival. As usual, we will be having a buffet with wine after the opening ceremony so please bring some items of food with you. There will also be a raffle and prizes would be appreciated.

Looking forward to Sunday 6th March, The EAF AGM will take place in the morning followed by a lecture by Joe Cornish in the afternoon. Tickets for this event will be very popular so if you want to go, contact David Robinson who will book tickets (£10) as soon as they come out.

Lynda Robinson
Programme Secretary



Man of Israel by Roy Essery

ANNUAL EXHIBITION 2010

With Notes on How to Enter

Exhibition Details

The Exhibition will be staged in the Council Chamber, Town Hall Galleries. The Exhibition will be opened by the Mayor of Ipswich, Councillor Jane Chambers, on Tuesday 1 March 2011 at 7.30.

The Exhibition will be open to the public from 2 March until 12 March from 10.00 to 5.00, Tuesday to Saturday. The Projected Images section of the Exhibition will be shown in the Bramford Church Room on Monday 7 March 2011 at 7.30pm.

The selectors for this year will be:

Prints - Anne Miles FRPS MPAGB EFIAP

Projected Images David Steel

All members, with the exception of Associate Members, are entitled to enter their work and new members are especially encouraged to enter. The images to be exhibited are selected by the independent selectors and his/her decision on acceptances is final. The Exhibition Secretaries have no say in what is accepted for display.

If you enter work for the exhibition you will get some work displayed on basis of 0-10 entries – minimum of 1 acceptance and 11- 20 entries – minimum of 2 acceptances or 3 if substantially more than 20 were entered. All other acceptances are entirely at the discretion of the selectors.

Stewarding the Exhibition

All those entering work for the exhibition **must** do a least one session (preferably two sessions) of stewarding the exhibition. In exceptional circumstances, by agreement with the President or an Exhibition Secretary, this rule can be waived. We need to have two stewards at all times when the exhibition is open. A Rota will be circulating at future meetings – please sign up early and don't wait to be asked. All members, both entrants and non-entrants, are asked to make a special effort to help with stewarding the exhibition.

Return of Cups and Trophies

Will members holding cups or trophies from last year please ensure that they are returned to Barry Freeman, **cleaned and polished**, and in their protective bags by the closing date for the receipt of entries.

Exhibition continued on 6

Entering the Exhibition

The deadline for submission of entries to the Annual exhibition is Monday 3 January 2011. Entries (with entry fee) should be handed to David Robinson or Matthew Clarke on or before the 3rd January 2011 (first meeting of 2011).

If you cannot attend the meeting on the 3 January you may hand in your entries to Matthew Clarke or David Robinson in advance. You may also leave your entries at Phil Smith's house in advance but you should phone Phil beforehand to check when this would be convenient. Phil's phone number is 01473 413554 and his email is: philip.smith743@ntlworld.com. His address is in the Programme booklet under Print Section – Secretary. Digital entries may be posted to Matthew Clarke but must arrive no later than 3 January 2011.

Please ensure that your entry form and your entry fee is included with your entries and not just handed to the Exhibition Secretaries. Cheques should be made payable to IDPS.

There are 3 categories - you **may enter up to 20 Monochrome prints, 20 Colour prints and/or 20 Projected Images**. You can find advice on how to prepare digital images for entry at:

<http://www.idps.org.uk/page4.html>.

To help defray the rising cost of hiring the exhibition space the **entry fees have increased to £6.00 for each category, i.e. Monochrome Prints, Colour Prints and Projected Images, or £18.00 if all three categories are entered**.

Entry forms and rules are available on the web site at: <http://www.idps.org.uk/page4.html> and will be available at meetings over the next few weeks. There have been no changes to the rules this year. A summary of the rules are included with the entry forms and these should be read carefully. If in doubt, refer to the full rules on the web site. If you have any queries or concerns about your entries or the rules please contact one of the exhibition secretaries:

Prints: David Robinson – email: thosdavid@aol.com phone 01206 241419

Projected Images: Matthew Clarke email: matthew@mclarke.wanadoo.co.uk phone 07710 134477

New Members/ Beginners

Beginners have their own section of the Annual Exhibition which is judged separately from the “open” section which is really for experienced members.

You are a Beginner if:

You have been a member of IDPS for less than 3 years

You have not won the IDPS Cup (Beginners Cup) or any award in the “open” section in a previous exhibition.

You do not have distinctions from the Royal Photographic Society (RPS) or

Photographic Alliance of Great Britain (PAGB).

You have not had a print or projected image accepted in a National or International Exhibition.

In other words the Beginners' section is for newcomers to club photography. If you are not certain about entering the Beginners' Section ask Matthew Clarke or David Robinson (Exhibition Secretaries) or Lynda Robinson (President) for advice or email help@idps.org.uk

Prints:

Prints must be mounted on card, any colour, size 50 cm by 40 cm and must be adequately backed. Low tack adhesive tape, e.g. Drafting tape or Masking tape, must not be used and there must be **no Velcro** or other "hanging" material on the mount (to avoid damage to other prints). Monochrome means black and white but one tone may be added to the whole image (e.g. sepia). A print which has been partially toned or had any colour added must be entered as a colour print.

The following information **must** appear on the rear **top left hand corner** (white adhesive labels should be used on the back of dark mounts) of the print – title and entrant's name, and B (Beginners) or R (Record etc.), L (Life) and NH (Natural History) where applicable.

Example B or R, L or NH (if applicable)
 'Ipswich Town Hall by moonlight'
 Joe Bloggs LRPS

Members submitting prints should submit their entry in a suitable print box or case. Prints wrapped in cardboard or plastic bags are more susceptible to damage and cause transportation problems for the Exhibition Secretary. Entrants are also requested to pack their prints in their boxes in the order that they appear on their entry forms. All print and slide boxes and packing material should be marked with the entrant's name.

Digital Images for Projection

Digital Images must be submitted on DVD, CD or USB memory stick – these must be clearly labelled with the entrant's name. Images must be saved to the media in a single folder (named as the entrant's name e.g. Joe Bloggs).

Images must be a maximum of 1400 pixels wide and 1050 pixels high and saved as jpg (JPEG) at maximum (12) quality.

Each image file must be named as ixx where xx is the entry number on the entry form e.g. i01.jpg, i02.jpg etc.

Exhibition continued on 8

Each image must have the title and author entered in the EXIF data. Entries for Natural History, Life, Record and Beginners must have NH, L, R or B respectively entered in the subject/description in the EXIF data. For advice on how to add the information to the EXIF data see and click on the red boxes: www.idps.org.uk/page4.html

Slides

Slides must be mounted in standard 2" by 2" mounts, marked clearly with the Entrant's Name, Title (as on the entry form) plus NH R L or B if appropriate and spotted in the bottom left hand corner when viewed correctly. Members submitting transparencies are requested to submit them in a suitably labelled slide box.

Entry Forms

The forms look like this with couple of examples of what to fill in (hand printed is fine by the way):

Beginners:

No.	Title	C	Ref	Leave Blank	
1	Autumn Colours at Epping		B		
2	Orfordness Lighthouse		B		
3	Another good Image		B		

Natural History, Life and Record:

If you wish to have an image considered for the Natural History (NH), Life or Photojournalism (L) or Architecture, Record, Scientific and Technical (R) Cups you **must** indicate this on the entry form. By indicating this on the entry form you are stating that the images meet the definitions (see below) for each class. You **must** also mark your print or slide appropriately (see below) and for digital images you must enter the relevant letter in the subject/description in the EXIF data (see below).

Here is an example of how to complete the entry form:

No.	Title	C	Ref	Leave Blank	
1	<i>For a natural history image</i>		NH		
2	<i>For a life or photojournalism image</i>		L		
3	<i>For Architecture, Record, Scientific and Technical images</i>		R		

Definitions (from the Exhibition Entry Rules):

Natural History (NH)

Images depicting observations from all branches of natural history, except Anthropology and Archaeology, in such a fashion that a well informed person will be able to identify the subject material and to certify to its honest presentation. The story telling value of the image must be weighed more than the pictorial quality. Human elements shall not be present unless, on rare occasions where human elements enhance the nature story, they are unobtrusive. Images of artificially produced hybrid plants or animals, mounted specimens, obviously set arrangements, derivations or any form of photographic or digital manipulation that alters the truth of the photographic statement are ineligible, with the exception of detailed micro or macro images and scientific banding on wild animals. A Natural History image, in the context of these rules, is defined as showing one or more organisms living free in its natural habitat. Accurate descriptive, rather than cute titles should be used for natural history pictures.

Architecture, Record, Scientific and Technical (R)

This classification excludes natural history. It includes images made primarily to record the inherent scientific, technical or historic interest of the subject(s). Clarity of detail is essential and no multiple images or manipulation are allowed except for the removal of minor blemishes. Titles must be descriptive of the subject of the picture.

Life and Photojournalism (L)

Life - "Observation of human nature – spontaneous images of people, doing anything or nothing, bringing out, where possible, character in the people or action (non studio)" or

Photojournalism - photographs of events or incidents of journalistic interest including sport which may or may not include people.

No multiple images or manipulation are allowed except for the removal of minor blemishes.

Beginners (B) A 'Beginner' is defined on page 6/7 of this Bulletin

Monochrome Prints

Monochrome prints must be black and white or have been modified by the addition of a single tone to the entire image. A print which has been partially toned or had any colour added cannot be entered as a monochrome print. The processing and finishing of silver based monochrome prints must be the sole work of the entrant.

Colour Prints

Colour prints include images which have been modified by the addition of partial toning or by the addition of any colour to any part of the image.

David Robinson, Exhibition Secretary

**Digital Creative Specialist Group to
Digital Portfolio Group
(A change of name and type of work)**

As many of you know there is a Digital Creative Specialist Group within IDPS. that has approximately thirteen members who range from newcomers to the more experienced workers. The members in this group enjoy sending Creative projected images to all the group's members and then follow up later in the month with comments.

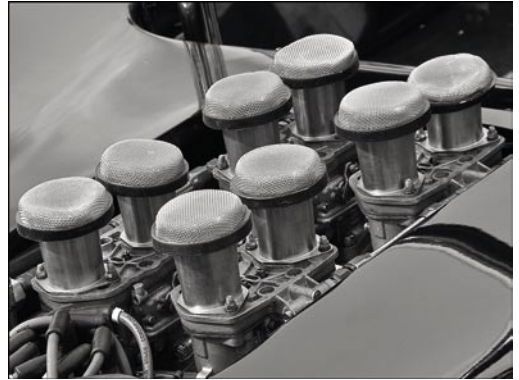
However the group has come to the decision that to produce a creative piece of work each month is hard-going so the decision was made to change the group name to the IDPS Digital Portfolio Group. This will allow members to submit landscapes, portraiture, natural history, still life, creative etc., but will still follow the same format of submitting images and then commenting on them.

There is a dedicated group page on the IDPS website www.idps.org.uk where all the group's images are on display.

If you would like to join the group now it covers all ranges of photography please drop me an email philip.smith743@ntlworld.com all the images submitted need to be sent in the same format as for On-Screen work i.e.1400pixels max wide x 1050pixels max high.

I would like to encourage all new-comers/beginners to join this group as it's a way to get some good feed back on your work and also to learn from the more experienced worker, as newcomers/beginners we do not expect you to be good with commenting on others' work, however this can also help with the learning side of photography.

Phil Smith LDPS (Group Leader)



*Pictures to the left are from the Donington Day
(from the top)*

Air intakes by Neil McCarry

Tail Lights by Christine Hart

Through the Esses by Barry Freeman

New Members Group

The new members group has had two most enjoyable days out; the first to Donington Park and the second to Epping Forest.

On 4th September we travelled to Donington Park racing circuit at the kind invitation of Wayne who had 16 tickets to the Masters Historic Car meeting. This was an opportunity for the new members to practice such skills as pan & blur and high speed photography. Once again the weather was kind and despite the early start the group enjoyed the day which included the use of a corporate box. It was made more enjoyable by the members who contributed wonderful cakes for all to enjoy.

This was followed by an informal evening at the Dove Public House for a taste of one of their real ales and a discussion of the day's events. Individual pictures were shown and discussed on the night and Terri Thorpe kindly shared her knowledge to show members simple Photoshop processes to enhance their shots. Thanks Terri. David Robinson also discussed the annual exhibition and encouraged the new members to enter this year.

On 6th November we travelled to Epping Forest to capture the wonderful autumn colours; they did not disappoint. The light was very flat

to begin with which made it difficult. This was followed by warm sunshine which made the forest very contrasty, again testing our members' abilities. Sausage sandwiches, homemade leek & potato soup and lemon drizzle cake helped the day along. (Do you see a theme going here?)

I am sure that with the help of our more experienced members who come along to give guidance and moral support the new members have enjoyed themselves and learnt new, very different skills on each day.

If you have joined the society in the past 3 years and have not yet joined us on our travels please do come along on our next day out (watch this space). You do not have to be a beginner at photography to enjoy our trips as it is also an opportunity to get to know other members and share the photographic experience.

We would like to see entries into the exhibition from new members. If you would like any assistance in preparing images, either print or digital then please do not hesitate to ask. Do not forget you can enter images that you have already used throughout the year. It can be daunting the first time but very rewarding to see your images exhibited for the public to enjoy. Do not forget that there is a section dedicated to new members so you do not have to compete with "the big boys".

Christine Hart (Group Leader)

(See some more pictures from the New Members Group day outs on pages 18 & 19)

Membership Report

Well we have had a flurry of activity in the first couple of months with a number of new members joining the society

Kenneth Laws

Jim Crisp

Bob Mawkes

Keith Lynch

Paul Edwards

Hugh De La Cassa

I hope you will all make them feel welcome at forthcoming meetings.

Wayne Turtill

DIGITAL GROUP

The group met at the Pavilion, Martlesham on Sunday 10th October. Those attending had an enjoyable day with subjects to satisfy the beginners through to, so called, advanced workers.

Brian Vincent started the day off with a comparison of quality for jpeg, tiff and raw files. David Robinson told us about his newly converted DSLR to dedicated infra-red and relayed some of his latest experiences with Silver EFX. Dennis Lumkin described a method of copying film negatives using a DSLR. Members brought along the prints and images to share the work and methods with others.

The next Group meeting is on Sunday 5th December. Let me know the subjects you would like covered. If you can do a small presentation please contact me. Beginners are welcome and time can be dedicated to you.

Barry Freeman (Group Leader)

Exhibition results for Charles Whitfield-King

40th Havant 2010 1 acc nature

16th Shrewsbury 1 acc nature

Dingwall 1 acc nature

1 acc open

6th International Swansea

1 acc nature

10th anniversary of East Anglian Air Ambulance Photographic competition:

First overall competition winner & regional winner for Suffolk

External Competitions

Selection has been done for the 3-way battle with Norwich and Lowestoft on 16th November and also the Cambridge Digital competition which is on 22nd January 2011 at Whittlesford Memorial Hall. We are also entering the GB Nature Cup again this year so if you have any new natural history images which you want considered please e-mail them to me at 1400 x1050 as soon as possible.(this is a digital only competition).

Lynda Robinson

STOP PRESS

On Tuesday 16th November a number of members attended the Annual Three Way Battle, held this year at Norwich. **WE WON**

IDPS 176 1/2 points

Norwich 170 points

Lowestoft 161 1/2 points

2 of our prints scored 10/10 - "Old Mabel" by Roger Hance and "Man of Israel" by Roy Essery

Print Section

As I sit here typing this report I long for the bright sunny days of spring & summer as its blowing a gale and tipping it down with rain, I always find this time of year depressing and to think Saturday evening TV is just as bad with the X Factor and coupled with Ann Widdecome's attempt at dancing it makes you want to emigrant to hotter climes.

So to counteract all this depression it was great to have the start of the IDPS season with the Print Section's first competition evening which well and truly went a long way to lifting the gloom as Harold Mousley cheered us up with his judging of "Human Portrait". I'm sure the twenty five members and guests enjoyed his usual banter whist judging a wide range and style of prints. The following members achieved top marks for their work:-

Chris Brooks	Ely Cathedral
Matt Clarke	Black-headed Gull attacking Coot
Matt Clarke	Red Kite attacking Buzzard
Roy Essery	Man of Israel
Roy Essery	Pin Mill No.2
Roy Essery	Flowering Succulent
Roger Hance	Reg
Roger Hance	Nude on Chair
Jean Pain	First Engagement
David Robinson	Holbrook Creek
Terri Thorpe	Meg

On Monday 18th October a print discussion was held and despite a lower attendance than usual for a normal Print Section evening, those attending enjoyed the discussion and displaying their work. It was a normal attendance for a discussion evening with more prints available than we can deal with on one evening and those shown given the time they deserve, which is appreciated by the authors.

The next competition evening on the 1st November saw the highest number of members and guests attending a Print meeting, thirty eight in total. I'm sure this was because of the return visit by Peter Hrebien to judge the set subject of "Disaster". Peter kindly stepped in to take Joy Hancock's place as she was not able to come along.

Some members may recall Peter judged the Ladies v Gents battle last year and despite awarding the ladies the win we were inundated by requests for him to come back to judge again. Peter's job was made more difficult as the advanced open section had over fifty prints to consider and this was very time consuming but he did a great job. We were only a few minutes late for tea, coffee & biscuits. Oh! and Hot-Chocolate.

When it came to judging the beginners/newcomers section Peter did a top job as he spent several minutes on each print giving helpful information regarding composition etc and afterwards I had several members

Print Section continues on 14

ask if we could use Peter again.

The following members achieved top marks for their work:-

Keith Cople	Me and my Shadow
Ken Weston	Wasted Resources
Barry Freeman	Orfordness Lighthouse
Michael May	Walked Away
Michael May	Terri Anne
David Shenck	Gannet
Norman Silver	Glam
Terri Thorpe	L'Etaq Sunset

The Personal Projects evening held on 15th November was a roaring success. A good attendance saw presentations by,

- Dennis Lumkin showing his pictures of old and famous steam engines – beautiful pictures even if out of fashion as far as judges are concerned.
- Roy Essery gave us an insight into his creative composite pictures, which lead to many questions of ‘how did he do it’?
- After tea, Terri Thorpe displayed some of her portrait work since joining IDPS and showed a DPI display of her technique, to change a good portrait into a competition winner.
- Finally Jean Pain gave us an insight into her digital infra-red photography.

I do hope you are all going to try and place an entry in the 2011 exhibition and I strongly encourage those in the beginners/newcomers section try to enter both the print and projected image section. If you are not sure what you need to do to enter please contact myself or any of the IDPS committee members as they will only be to pleased to offer help and advice.

Phil Smith LDPS Print Section Sec

EAF World of Colour

Sunday, 06 March 2011

At Latton Bush Centre, Southern Way, HARLOW

The EAF AGM held in the morning is followed after lunch by a
JOE CORNISH Hon.FRPS Lecture

“AN AFTERNOON WITH JOE CORNISH”

Stunning Landscapes from a Master, digitally projected images

Contact for Tickets: Naomi Saul

Tel: 01462 711772

Cost £10

Tickets must be pre-booked.

Application Form will be available to download and is sent to Club Secretaries in early January

ON SCREEN NOTES

Friday 1st October 2010 saw the opening of a new Season. It is said that thorough preparation always pays dividends. It certainly did for David Robinson who was with us for the complete evening. First to give us a talk on 'BASIC DIGITAL CAMERA CONTROLS' and to begin the evening David used two Compact cameras. A logical and well presented talk. Demonstrations were easy to understand and were not complicated by also using an SLR. I am sure it eased many worries for members yet to go digital. For extra comfort David pointed out he had used his Compact for some exhibition images, which brought to end a brilliant first half.

Tea, coffee and chocolate consumed, David then judged 'SIMPLICITY' and OPEN. He thought the standard of work was high but believed the use of many white borders around the images were a distraction and some good Simplicity images were spoilt by confused backgrounds. We never seem to retain the simple fact that it pays to look before we shoot!

SS SIMPLICITY

10 points Peter Cox Bluebells

OPEN

10 points David Pryke Surfer

10 points Terri Thorpe L'Etaq Sunset

Many thanks David for a very interesting evening.

I was in Boppard on Friday 15th October 2010 and so unable to be present when Jim Gunne-Braden and Phil Smith presented the results of the Picture Trail entries – there were ten. (The Trail took place in June 2010). I understand it was a very enjoyable evening.

PICTURE TRAIL

Winner David Robinson
2nd Roy Essery
3rd Peter Cox

Friday 29th October 2010. Time for the judging of "LATE EVENING" and OPEN, together with the bi-annual Battle with IPSWICH, AUSTRALIA. The evening began with Barry Freeman judging the former. He regularly makes time to judge for us and believed the standard of entries continues to improve. Barry felt some members had problems with defining what time of day constitutes LATE evening. (Needless to say the usual banter took place between Judge and Members)

SS LATE EVENING

10 points Peter Cox University in the Evening

OPEN

10 points Matthew Clarke Buzzard
defends itself against Red Kite

10 points Terri Thorpe Meg

Three cracking images and once again many thanks Barry for getting the evening off to a great start.

On Screen continues on 16

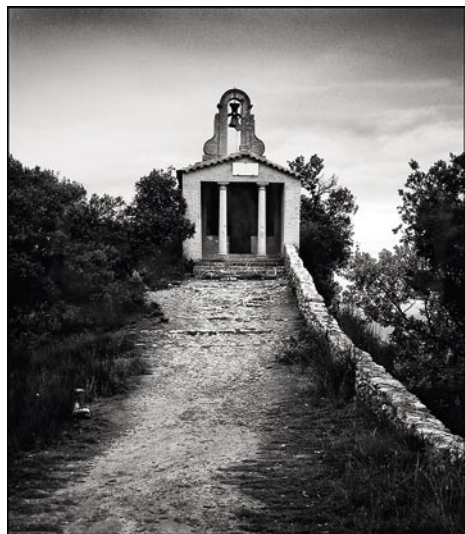
After refreshments the Battle between IPSWICH, AUSTRALIA and IPSWICH, ENGLAND (IDPS) was judged by Liz Hatten (A pre-recorded tape) the competition is divided into 4 Sections: Nature, People, Open and Scapes. We sat back, relaxed and enjoyed some superb images from both countries. (Well there was the odd exception!) It was a nail biting finish with only 2 points separating the two countries. IPSWICH, ENGLAND (IDPS) 205 points IPSWICH, AUSTRALIA 203 points

The Aussies are not known for their modesty when it comes to competitions so why should we be different. We thrashed them!

Our grateful thanks go to Liz Hatten for an eloquent and absorbing piece of judging. (It is worth pointing out that Liz was unaware of the final result when she sent us the recorded images)

Enjoy your Christmas and here's to good health in 2011.

Brian Blomfield



The Studio Group

Our first two indoor shoots of the season have gone well and have been attended well by new and existing members.

The September shoot was modelled by a group favourite – Terri Ann. The shoot had a theme of “The French maid farce” producing some fun pictures complete with feather duster!

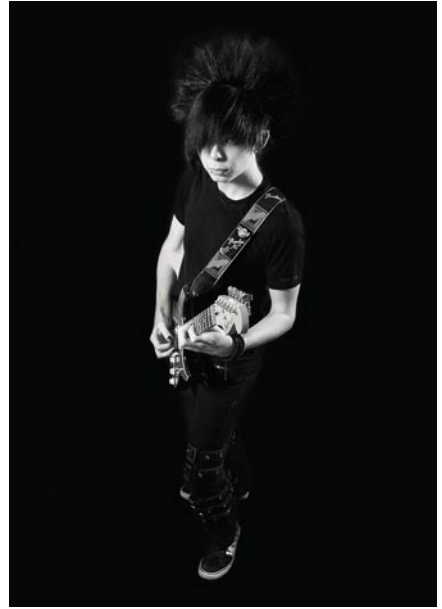
October's shoot was a little different with a grunge Rock theme – with new models Ryan and Hannah, who performed well considering neither of them had ever modelled before and I am sure that they will be willing victims again.

Our November shoot will be run slightly differently with photographers working in groups based around ability, to evolve the set and develop techniques with lighting. Those not shooting will be offered coaching on postproduction of images.

Please note that the Studio Group will be holding its AGM on 15th December at my house all are welcome; please contact me for further information. Telephone no. 01473 231455.

Terri Thorpe

Left - The Chapel by Alan Turner



Studio Group portraits, clockwise from top right: Ryan by Christine Hart, Hanna by Christine Hart, Ryan by Steven Hart and Hanna by Steven Hart



The studio picture at the top is Terri Ann by Wayne Turtill.

Three Epping Forest pictures - Above right is a View of the Forest by Christine Hart - Above left is "Well actually it's really this big" by Matt Clarke and below left is a pensive looking Wayne by Matt Clarke



*Three pictures taken in Epping Forest by Matt Clark
Top: Terri and Sarah
Middle: Steven Sawkins laying down on the job
Bottom: David Schenck in the forest*



1st Graphic Computers

**Proud Sponsors of the Ipswich and District
Photographic Society**

**Laptops and
Custom Built
PC Systems**

**Colour Profiling
and
Printer Calibration**

**Professional
Canvas
Printing**

**Large Format
Printing Service
Up to A1**

**Ink Cartridges
CD and DVD Media**

**PC and Laptop
Repair and Upgrade
Service**



And Much, Much More...

01473 711145

www.1stgc.co.uk 160 Felixstowe Road
sales@1stgc.co.uk Ipswich
Suffolk
IP3 8EF