

Ipswich and District Photographic Society

Preparing Images for DPI Competitions and Annual Exhibition



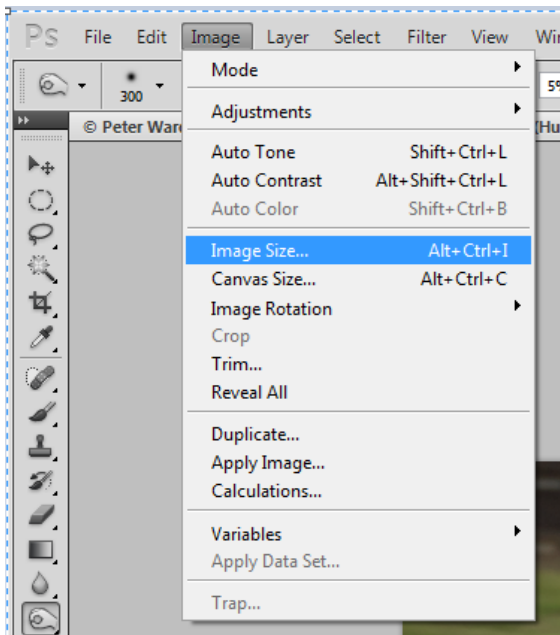
The following should work in either Adobe Photoshop or Elements. Other imaging packages have similar features.

After you have done all the adjustments, manipulations and cropped your images to your requirements so that it is in its finished form as you wish it to appear on screen before doing anything else **Save this image file** then:

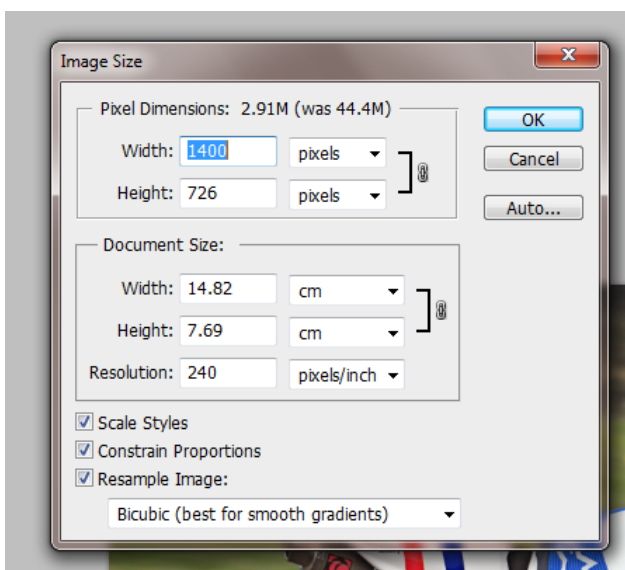
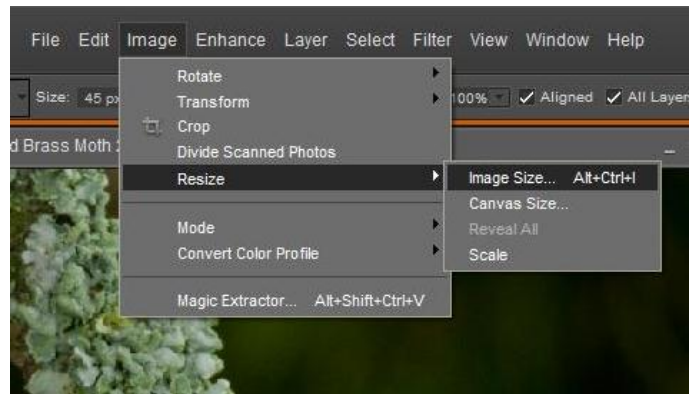
Change Size to fit within a size of 1400 pixels by 1050 pixels:

From the top menu bar select Image, then Image Size:

In Photoshop:



In Elements:

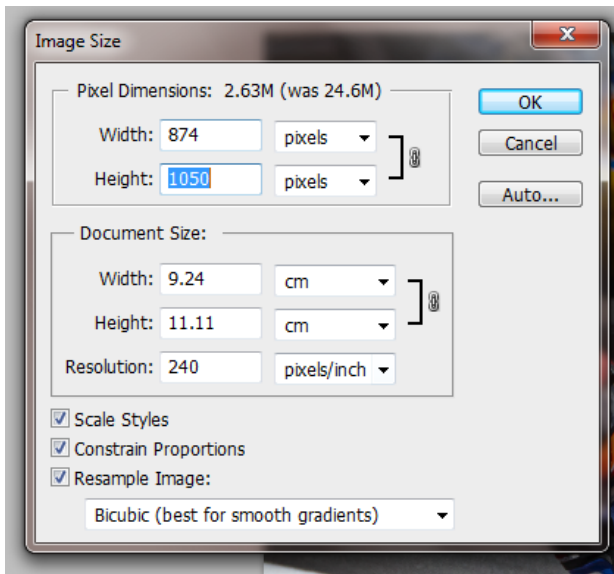


Landscape format images tick resample and constrain proportions and in “Width” insert 1400 and check “Height” is less than 1050 pixels –

Click Ok

Ipswich and District Photographic Society

Preparing Images for DPI Competitions and Annual Exhibition



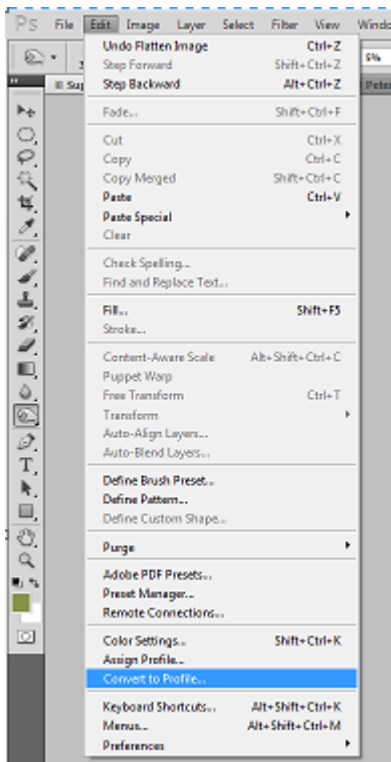
For **Portrait format images** tick resample and constrain proportions and in Height insert 1050 pixels check width is less than 1400 pixels

Click Ok

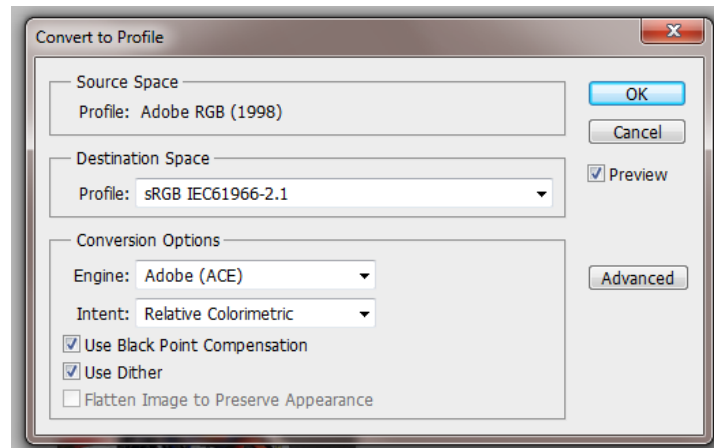
Next Convert to sRGB

First if you have layers in your image on the top menu bar click Layer and then Flatten Image.

Then in Photoshop:



Select Convert to Profile



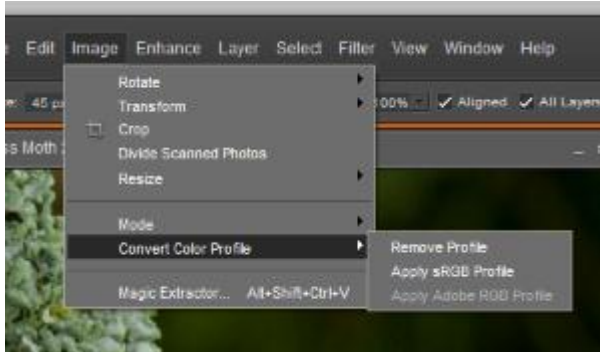
Select sRGB IEC61966-2.1 – click ok

Ipswich and District Photographic Society

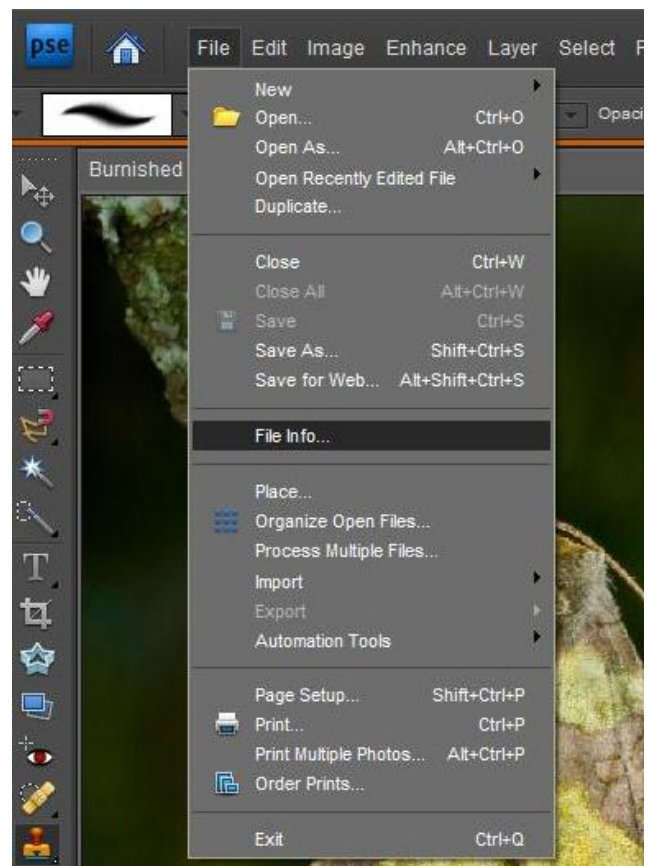
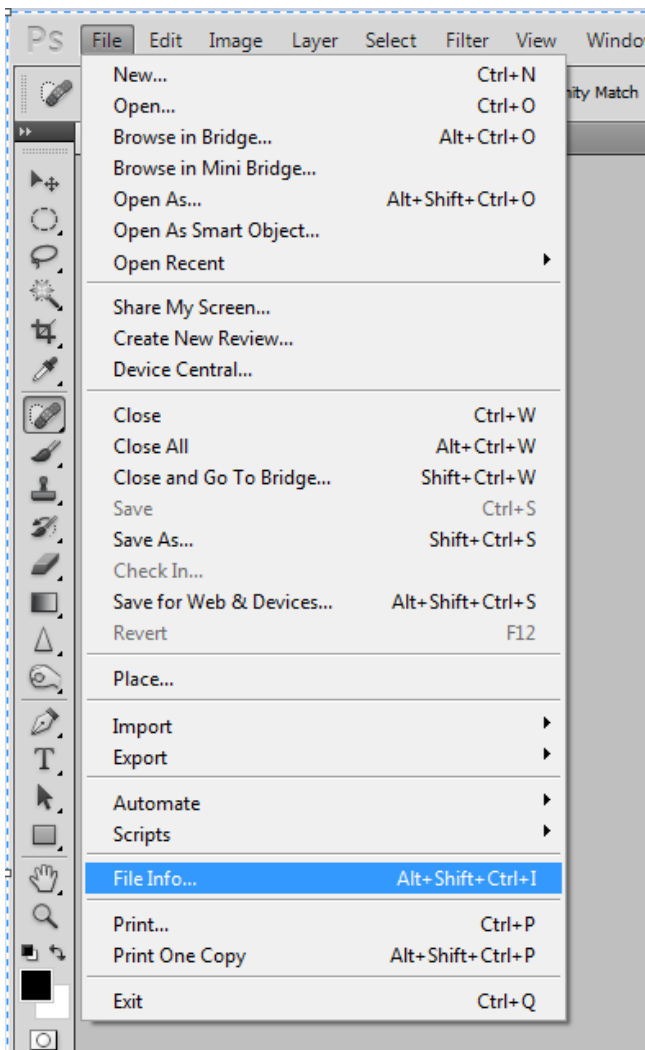
Preparing Images for DPI Competitions and Annual Exhibition



In Adobe Elements access this dialogue box via Image, Convert Color Profile, Apply sRGB Profile:

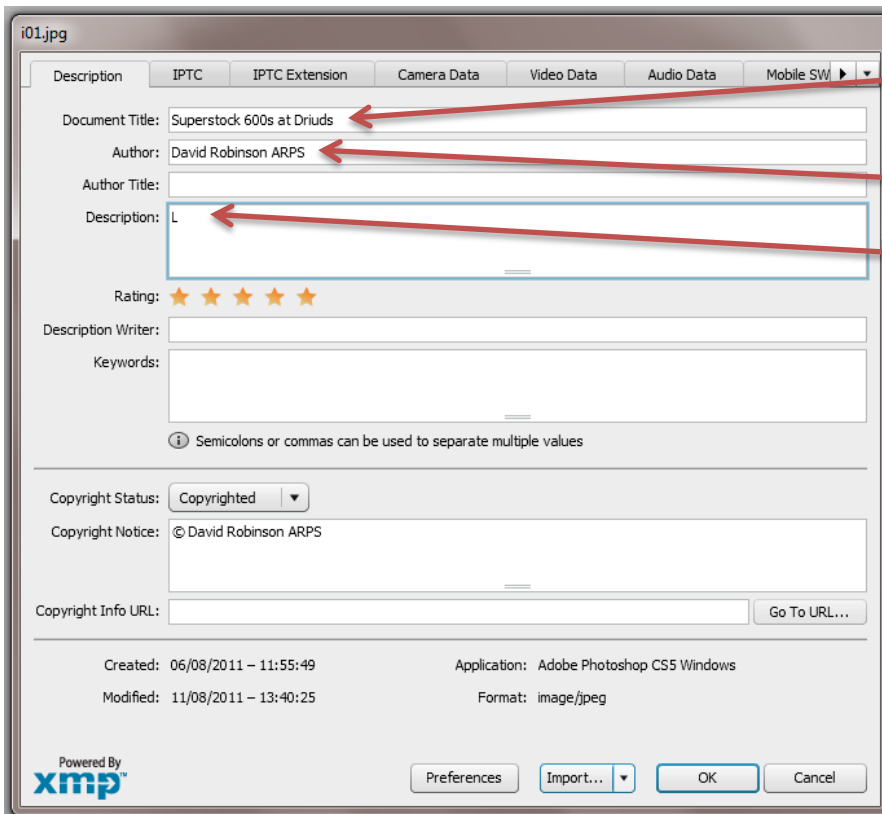


You now need to add the EXIF data so that the Competition Secretary can display your image and record your score. From the top menu bar select File, then File Info:



Ipswich and District Photographic Society

Preparing Images for DPI Competitions and Annual Exhibition



Insert image title here

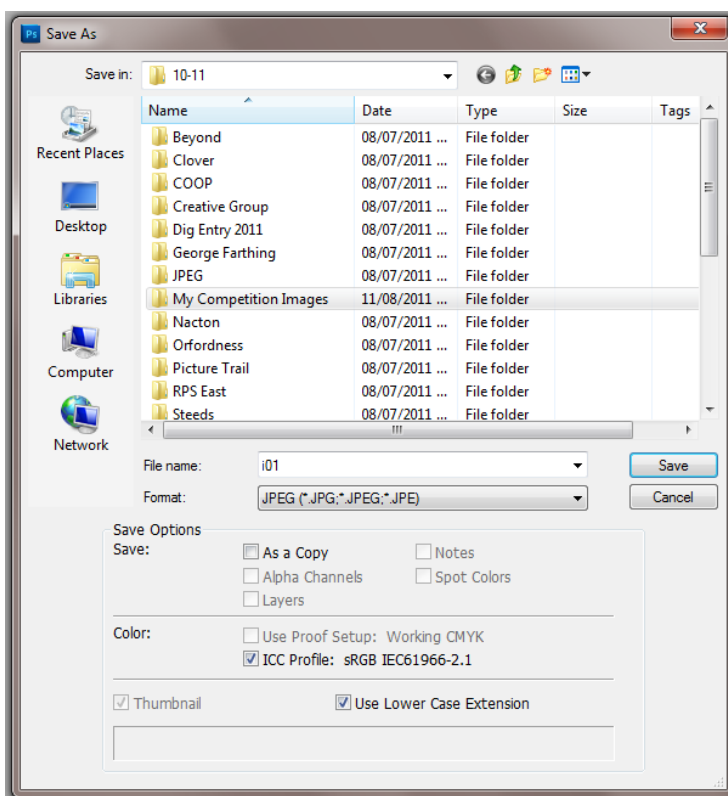
Insert your name here

Insert "Set" or "Open" as appropriate here (for Annual Exhibition insert the appropriate code letter)

Other entries are optional

Click Ok

You are now ready to save your image as jpeg.



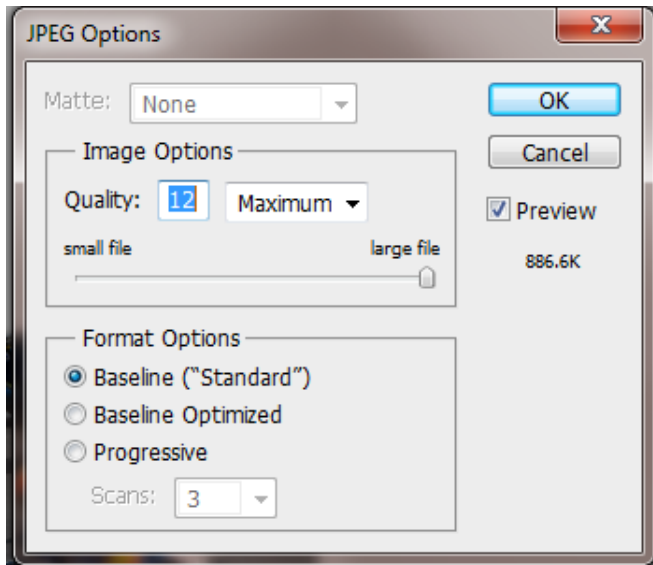
From the top menu bar click on File, **Save As** (not Save!!)

In Format select JPEG from the drop down list (click on down arrow to right of box). Delete the file name in File Name box and then type in i01, or i02 or as appropriate in the File Name box. Either create a new folder or select a folder to save your image. Later you will need to copy the images from this folder to a CD or USB or to attach to an email to submit your entry so pick a location you can find again!

Now click on Save.

Ipswich and District Photographic Society

Preparing Images for DPI Competitions and Annual Exhibition



You will see this dialogue box. If not already selected choose quality as Maximum and 12, use Baseline Standard. Click Ok – You have now saved the file with the new filename, sRGB colour space at the correct resolution and with the EXIF data added.

All that remains is to copy your entries to a CD or USB stick or email them to dpicompsc@idps.org.uk for monthly or other competitions. For the Annual Exhibition follow the advice on the entry form.

David Robinson

For help with this advice note email help@idps.org.uk