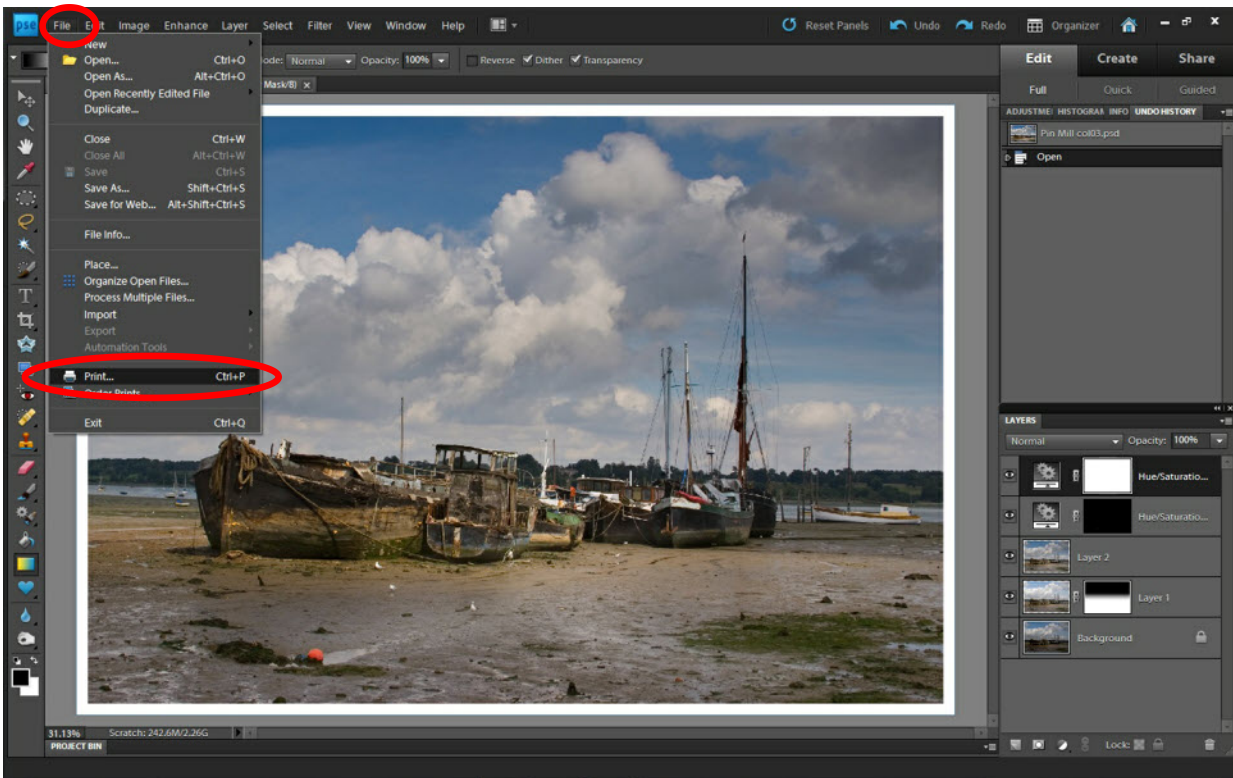
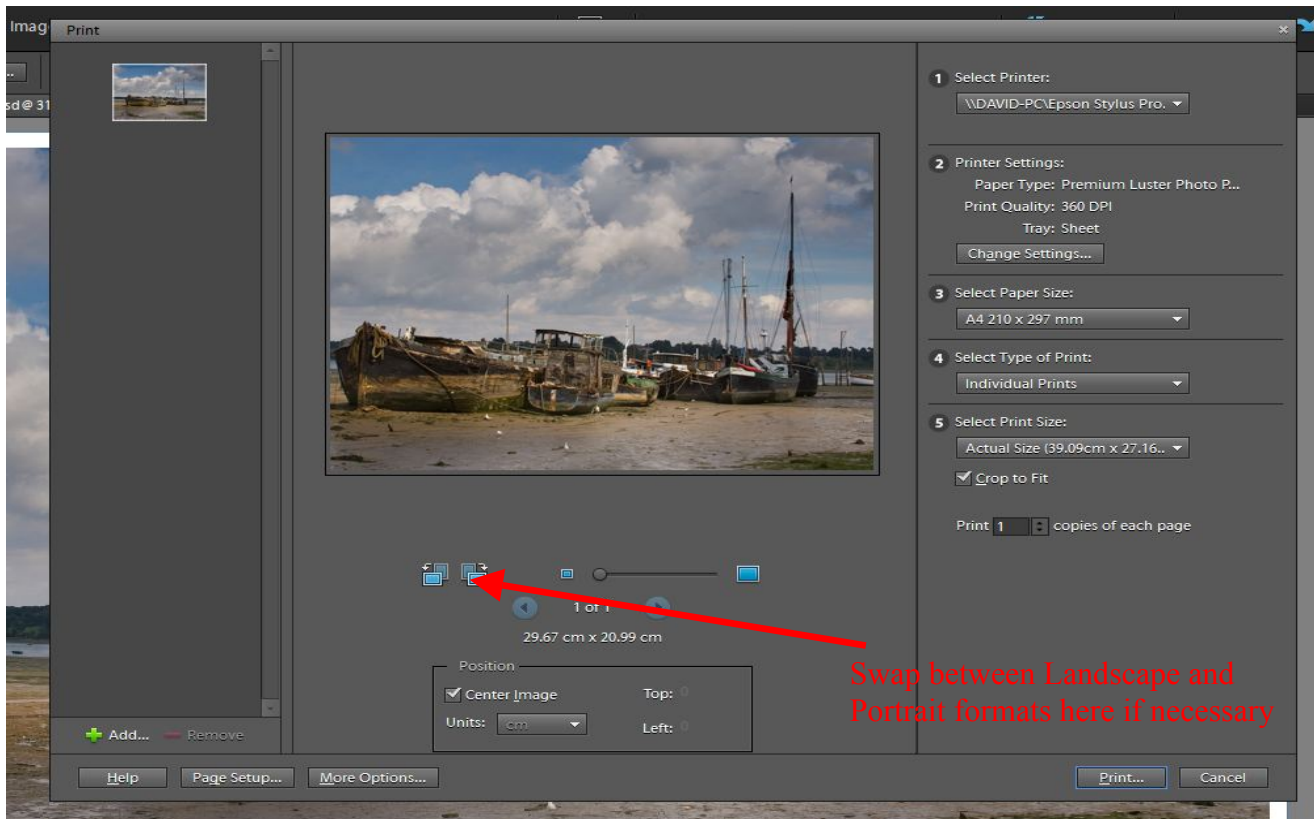


Printing From Elements 9

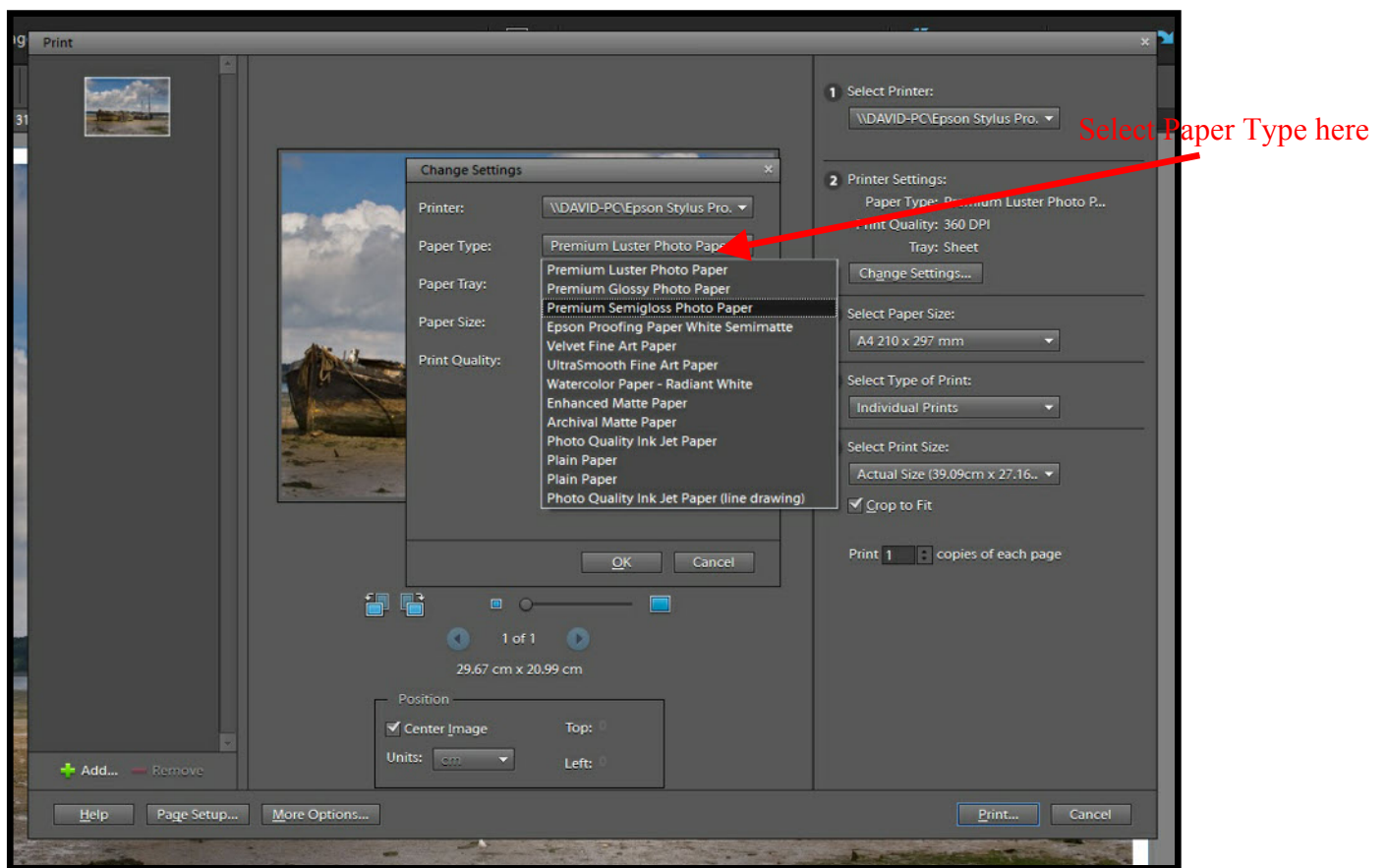
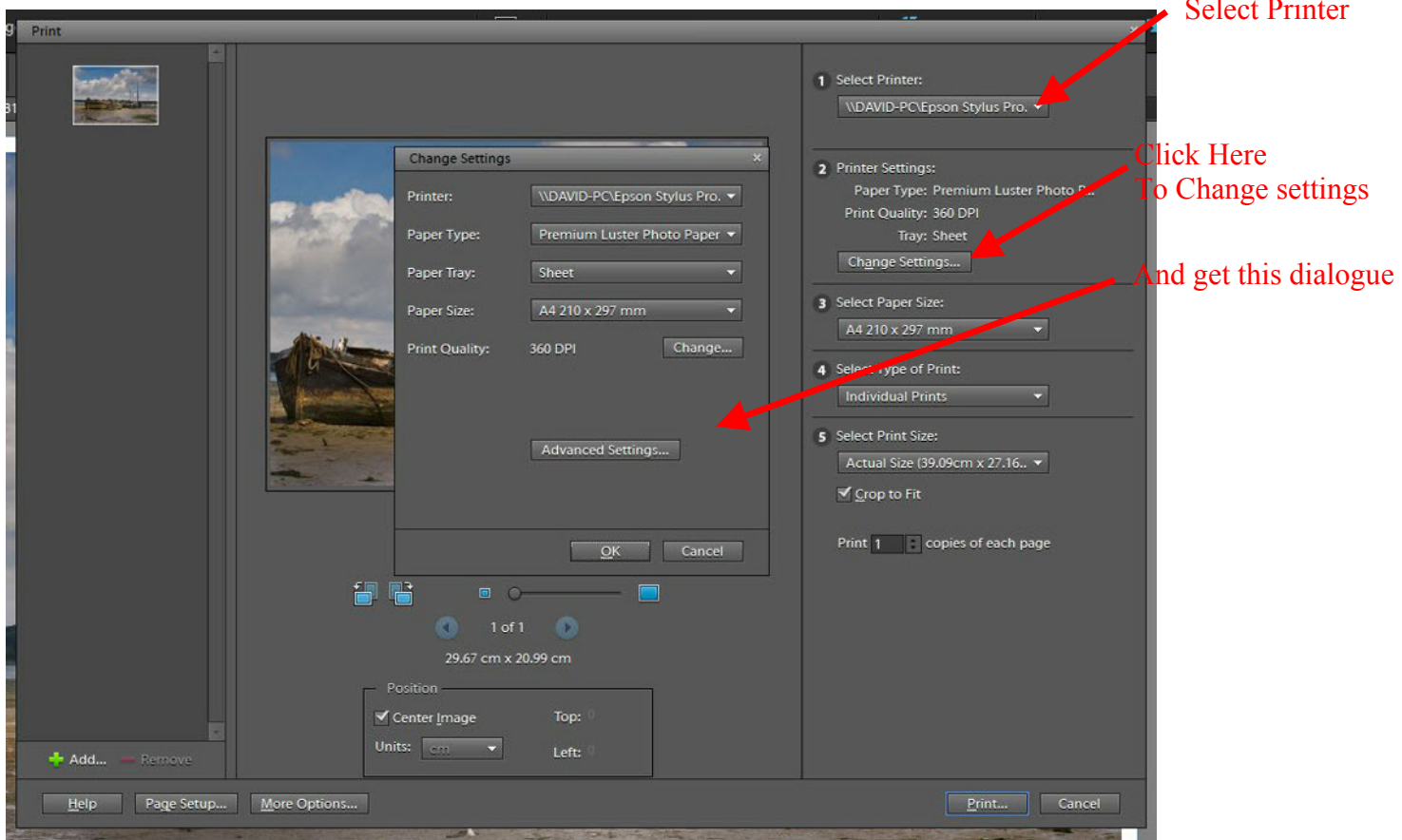
Step 1 - File, Print



Print Dialogue Box:

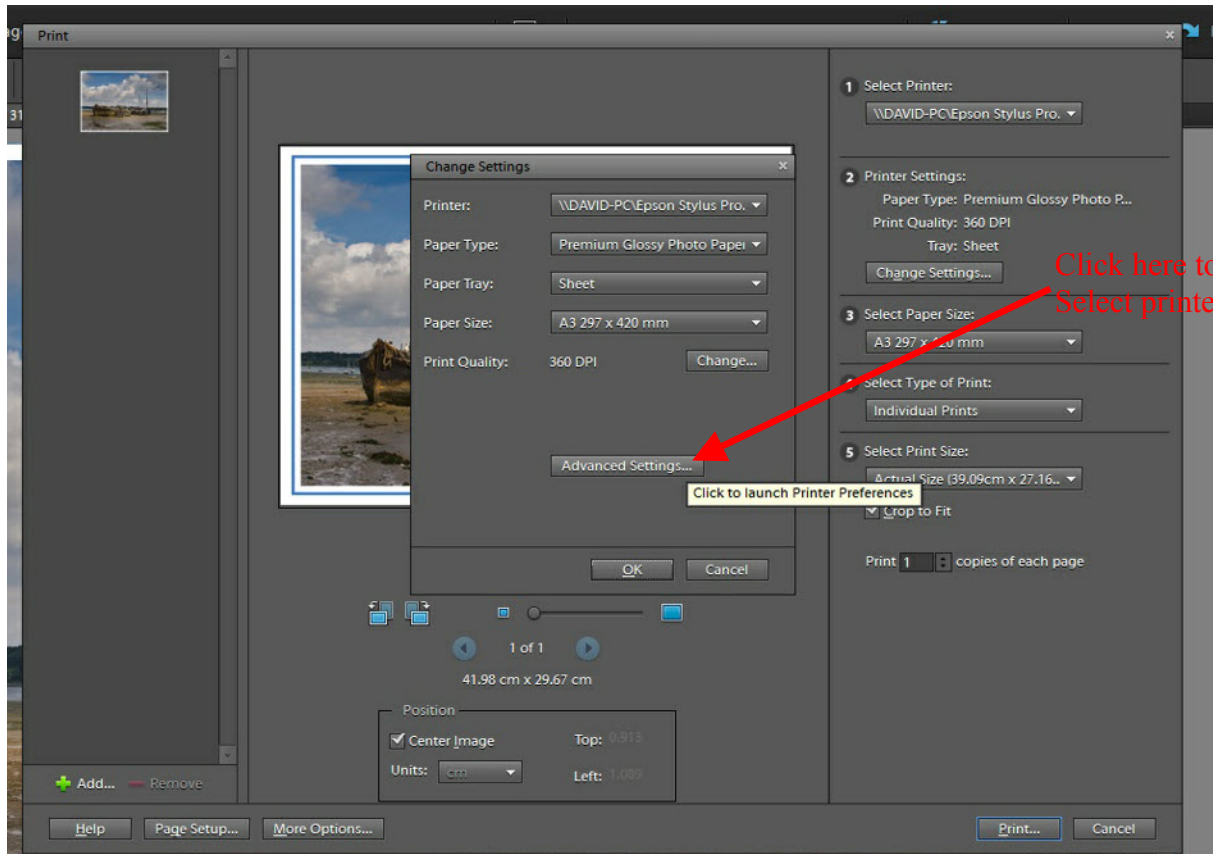


Step 2 - Print Settings: Select your printer, click on change settings and select the paper type



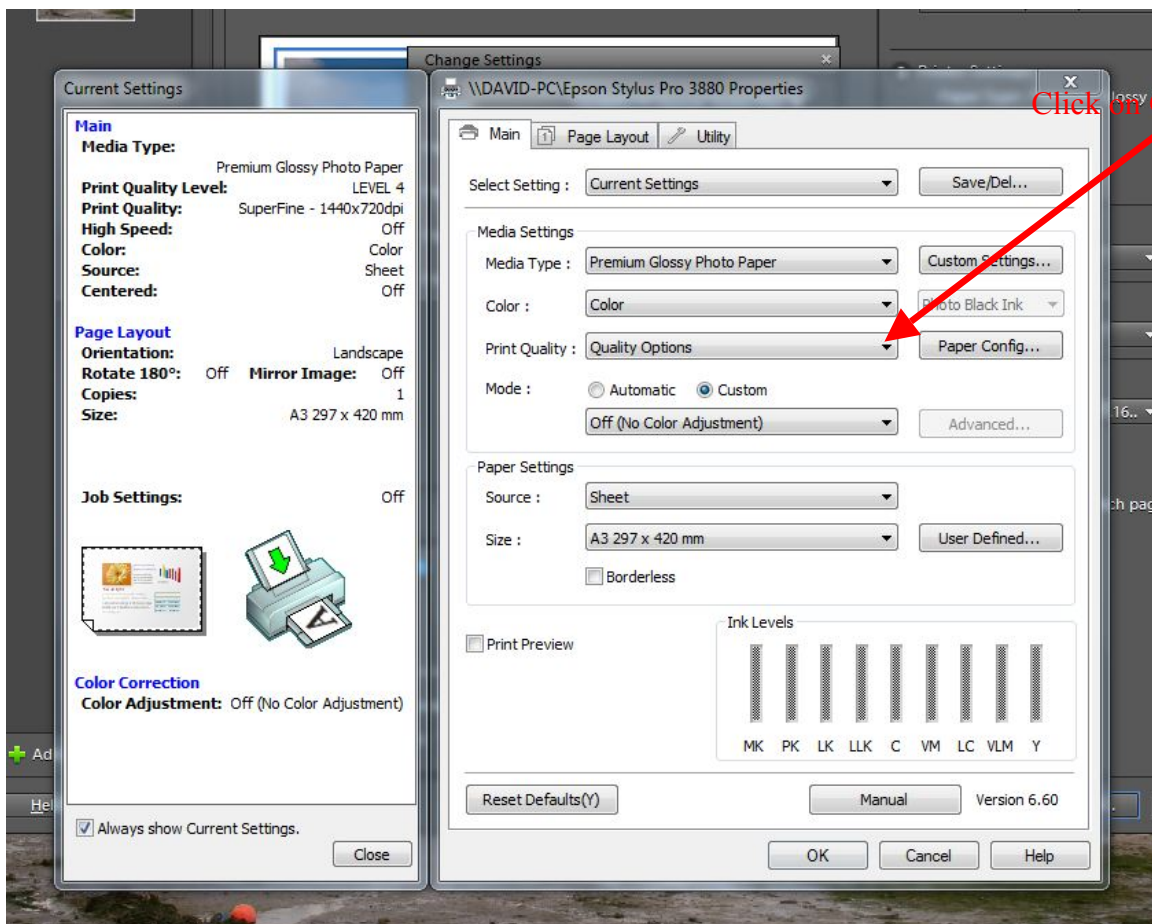
NB : If you use Permajet, Fotospeed or other papers you will need to download the correct ICC Profile for the paper from the relevant web site - this will also tell you what paper type to use for each paper

Step 3: Now you need to set the printer preferences - the images are for an Epson Stylus Pro 3880 but other photo printers will have equivalent preference dialogues. Select quality, check paper type.

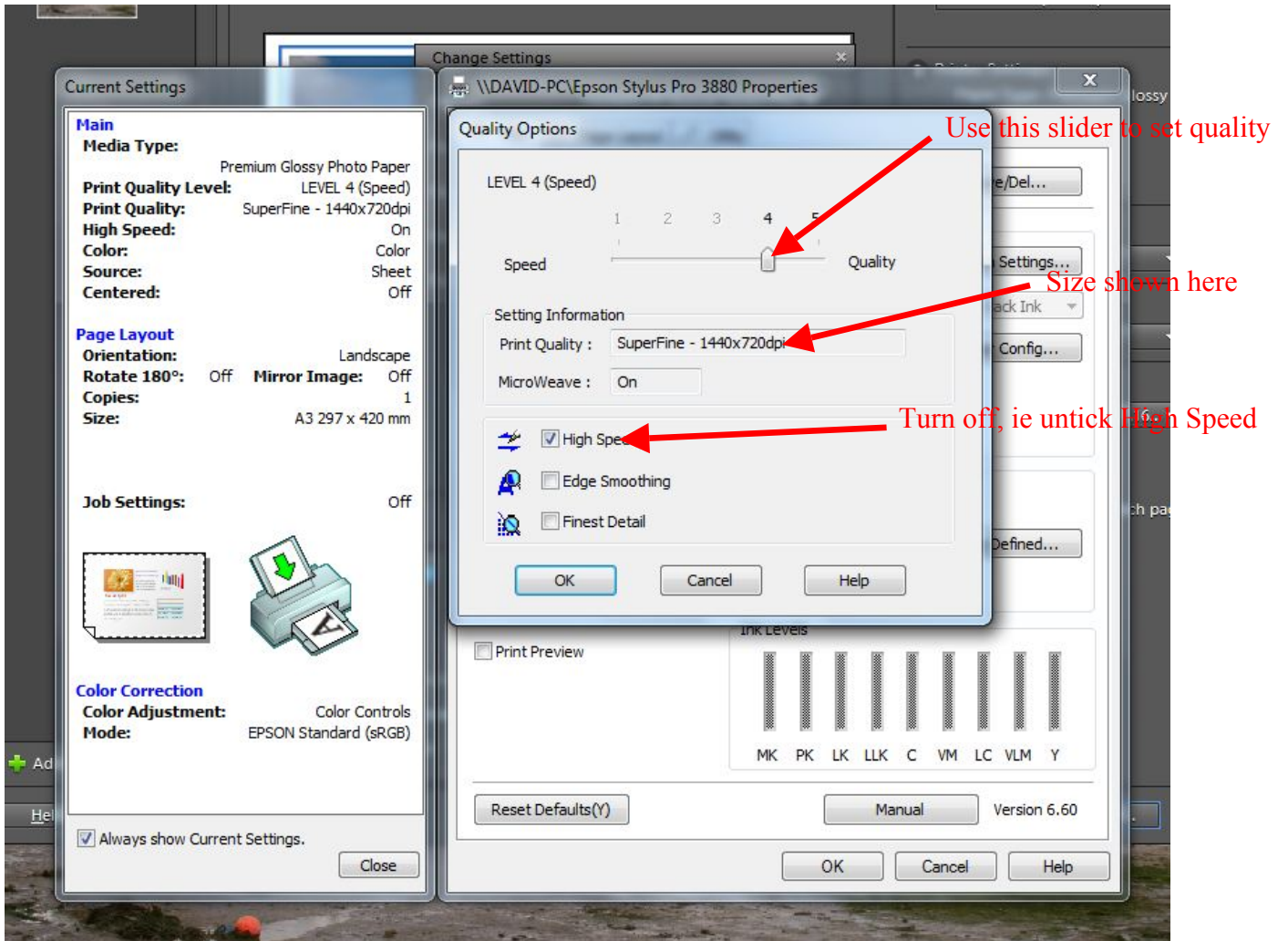


Click here to Select printer Preferences

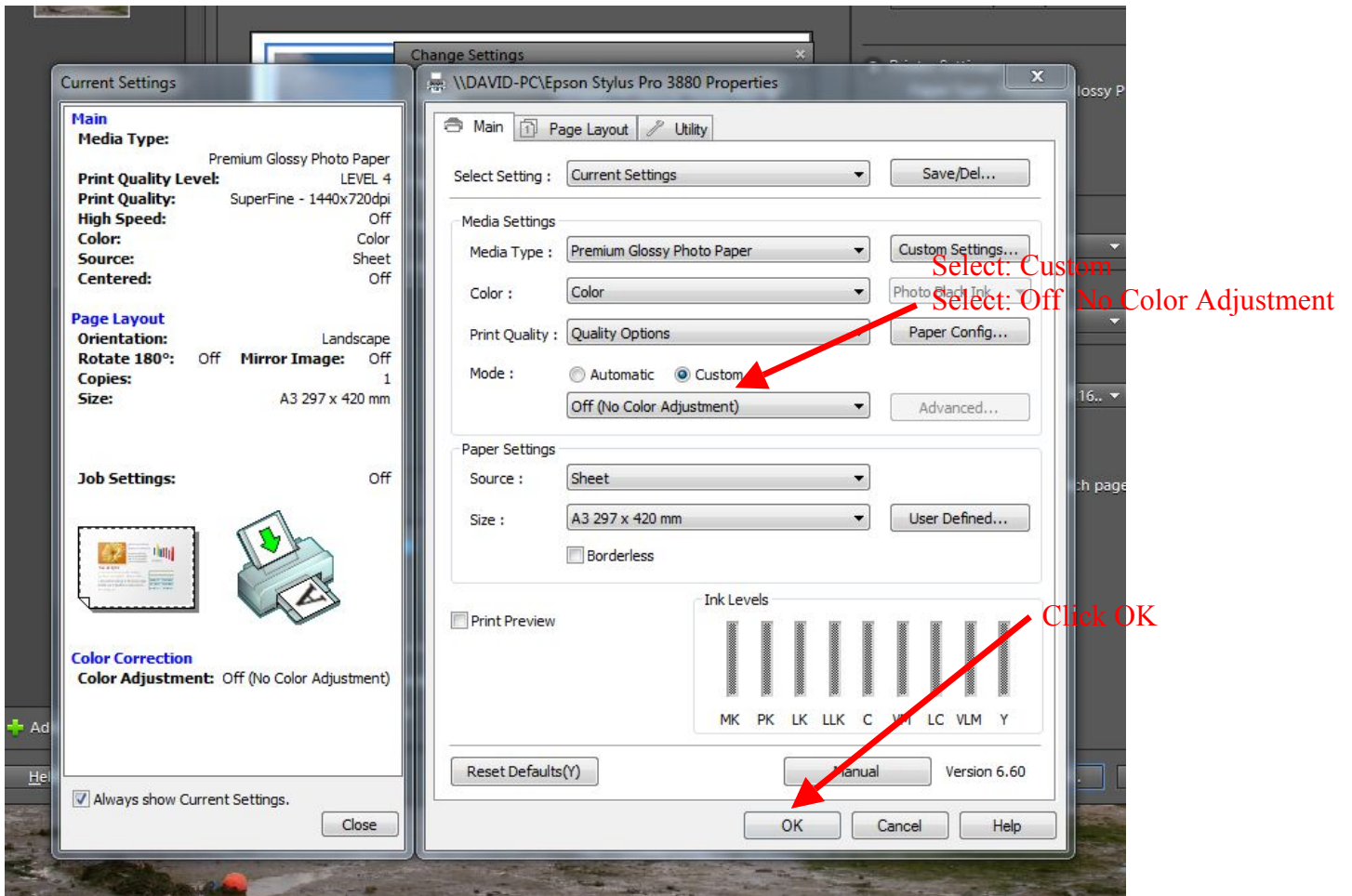
Click to launch Printer Preferences



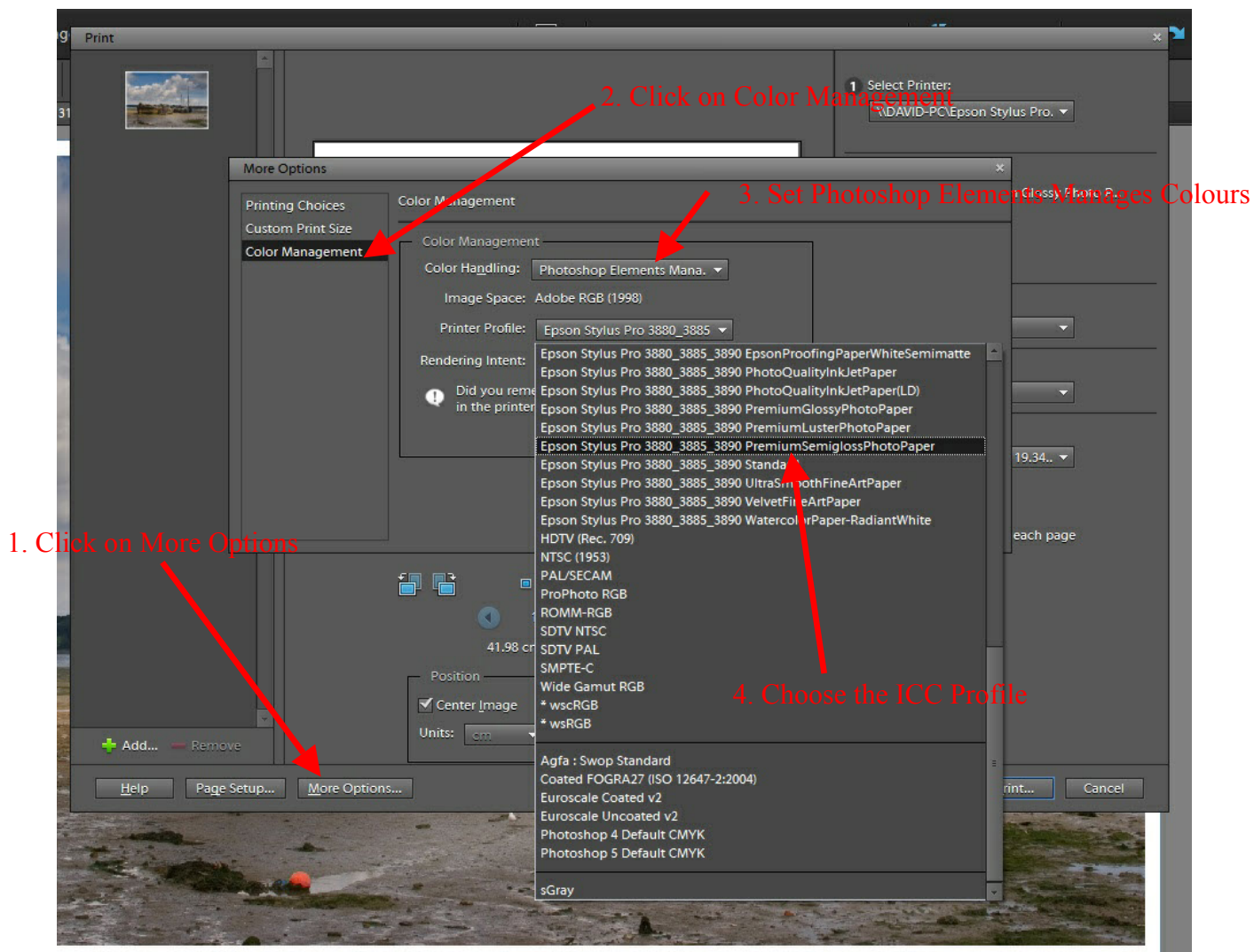
Click on Quality Options



Step 4: Click on Custom, TURN OFF Colour adjustments, set paper size, the click OK



Step 5: Click on More Options, click on Colour Management set Elements manages colour and choose the appropriate ICC profile for paper.



Step 6: Click Ok then click Print

